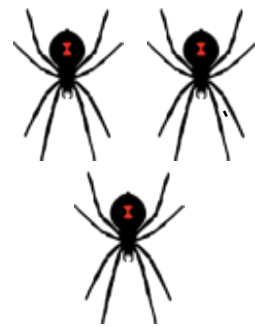
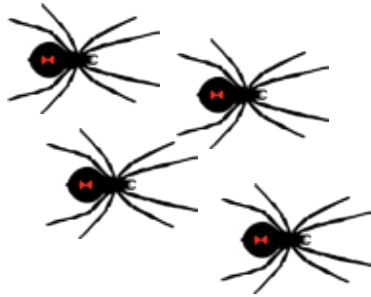


Meaning of multiplication

Grade 2 Multiplication Worksheet

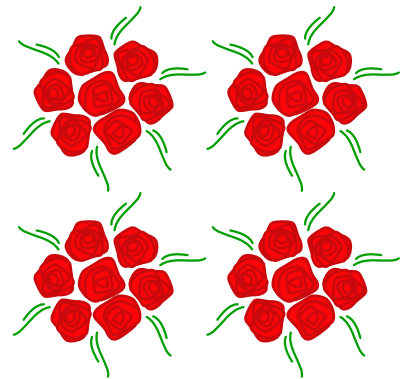
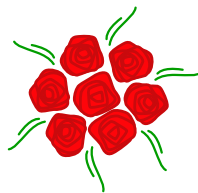
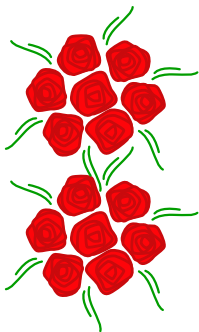
Circle the group of objects that match the equation:

$$3 \times 8 = 24$$



How many spider legs are in that group? ____

$$4 \times 7 = 28$$



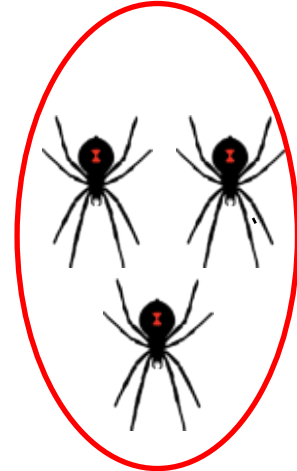
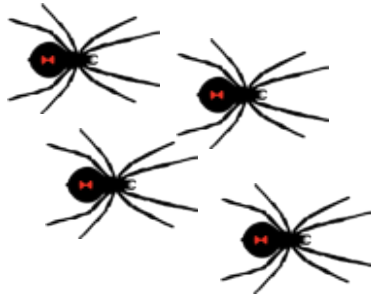
How many roses are in that group? ____

Meaning of multiplication

Grade 2 Multiplication Worksheet

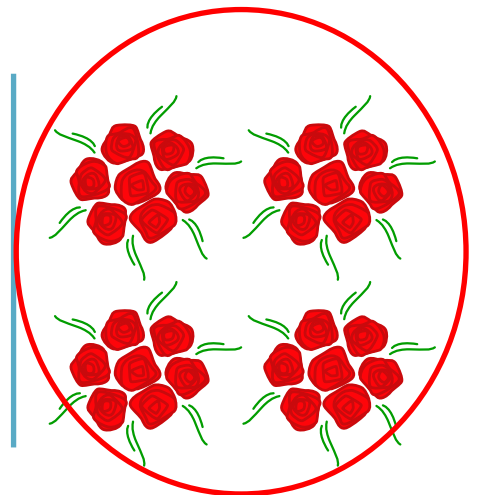
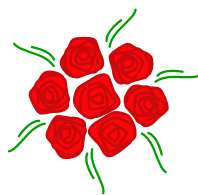
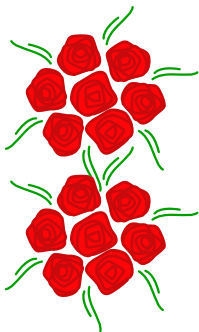
Circle the group of objects that match the equation:

$$3 \times 8 = 24$$



How many spider legs are in that group? **24**

$$4 \times 7 = 28$$



How many roses are in that group? **28**